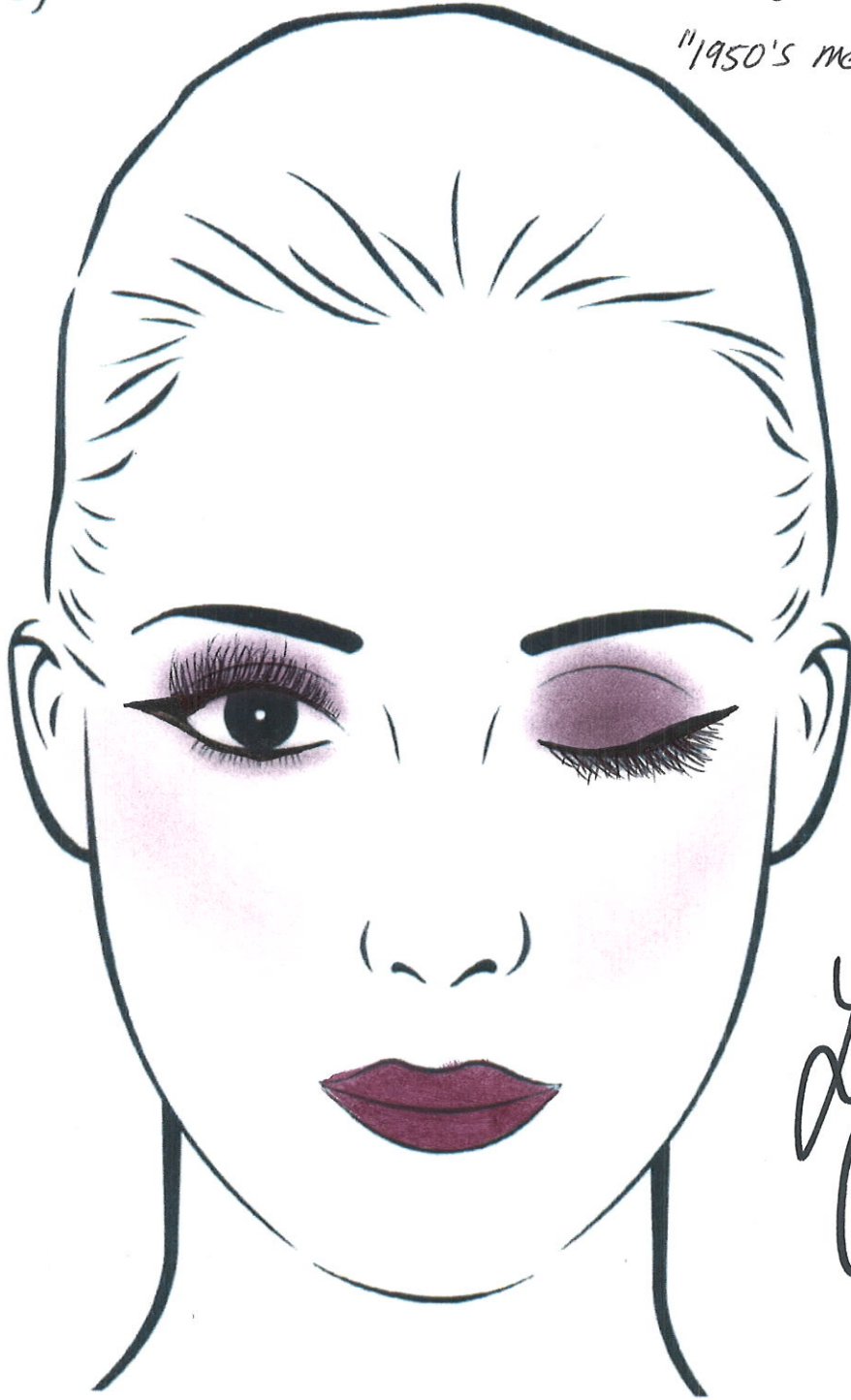


MARY KAY

Ashley's
"1950's mexicocity look"



Luis
Cacer

Lash line mascara in I & black Lip liner in Plum

Mascara

Lip Liner

Eye Color (Highlighter)

Gel eyeliner in Jet Black Crème lipstick in Rich Fig Mineral Eye color in Iris

Eye liner

Lipstick

Eye Color (Midtone)

Mineral Cheek color in Sky Bleach

Cheek Color

Lip Gloss

Eye Color (Accent)